

GW304-CHFS68 Watertight IP68 Threaded Insert

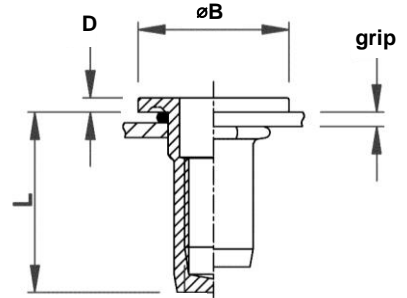
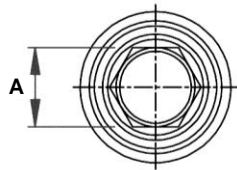
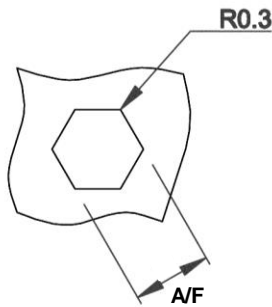
Stainless steel 304 · Large flange with underhead seal · Hexagonal · Closed end · IP68
M5 - M8

Features

- The special watertight head ensures metal-to-metal contact after setting, therefore assuring spin out resistance
- Underhead seal provides very good protection against ingress of fluids, moisture, oil or dirt even under high pressures up to at least 10 bar, and IP68 proofing

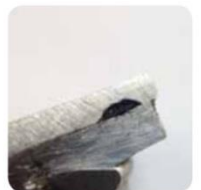
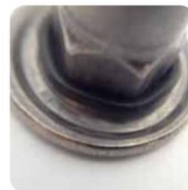
Material

- Stainless steel 304



Part No.	Thread Size	Grip Range		Hole Size A/F	A	øB	D	L
		min.	max.					
GW304-CHFS68M5-0530	M5	0.5	3.0	7.0	7.0	13.5	1.5	19.0
GW304-CHFS68M5-3045		3.0	4.5					20.5
GW304-CHFS68M6-0530	M6	0.5	3.0	9.0	9.0	16.0	1.5	21.5
GW304-CHFS68M6-2045		2.0	4.5					24.4
GW304-CHFS68M8-0530	M8	0.5	3.0	11.0	11.0	21.0	2.0	25.0
GW304-CHFS68M8-3055		3.0	5.5					27.5

Thread Size	Max. torque	Pull-out	Torque-to-turn	Shear strength
	Nm max.	Kn	Nm	kN
M5	~15.0	> ~15.5	> ~9.0	~4.8
M6	> ~23.0	~24.5	> ~22.0	~7.2
M8	> ~64.0	~39.0	~32.0	~9.4



Can't find what you are looking for?

We can provide unique and customized solutions.
Contact your nearest [Gripwell](http://www.gripwell.com.sg) team for assistance!